

Project Help of Steuben County

711 East Harcourt Road, Angola, across from the YMCA

Hunters, have you shot a deer and don't want the meat? You can donate it to Project Help. Here is how: Anstead Butcher Shop, 7245 N 925 E, Fremont, 495-7632, will process it for Project Help. You take the deer there. They are a state licensed check station too. It costs the hunter nothing to have the deer processed, Hoosiers Feeding the Hungry pays for it all. The deer is processed into ground burger and when Anstead Butcher Shop gets approximately 300 pounds of meat, they call Project Help to come pick it up. In short, you shoot, you deliver to Anstead, they process it for Project Help, people get fed and all the processed meat stays in Steuben County.

Project Help is still looking for individuals or organizations to adopt children or families in need this Christmas. If you are interested in helping someone, please call 665-9697.

Opportunities to



Step

into Ministry!

1. Step into Sunday morning ministry - Pastor Jake is looking for 2 more people to help out in between services to refill coffee, donuts, and juice.

2. Thanksgiving Meal Distribution at Project Help is Monday, November 25, 12:00 to 4:00 p.m. Set-up starts at 11:00. It's not too late to make a Thanksgiving donation or give your time. Contact Project Help at 665-9697 to help.

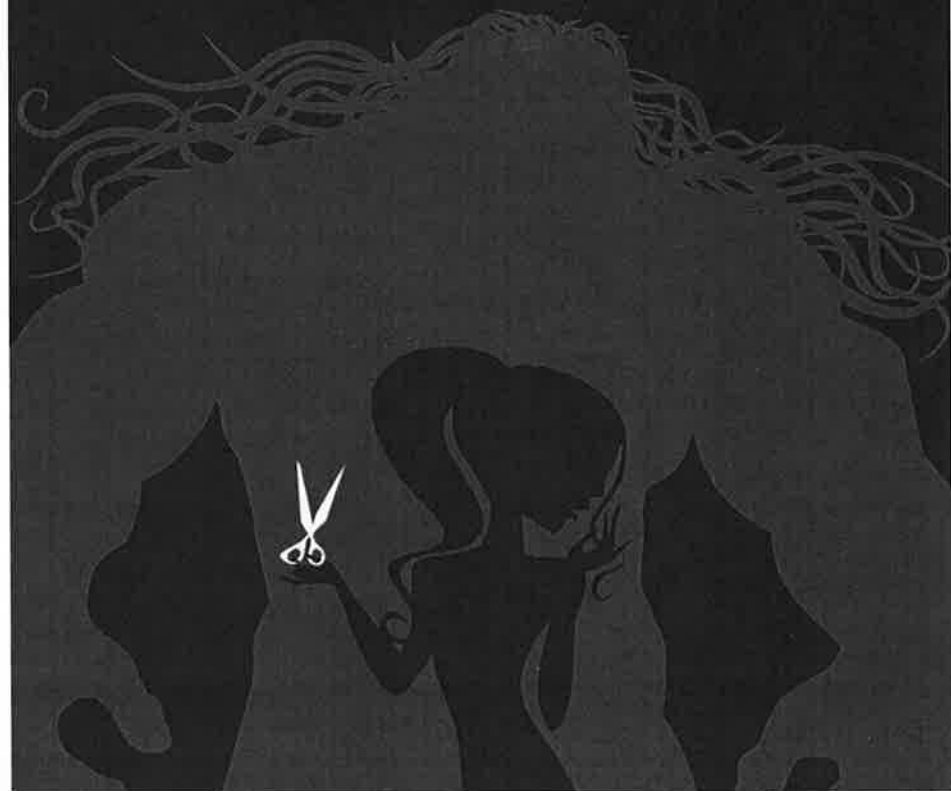
3. Bethlehem Marketplace, Saturday and Sunday, December 7 & 8, 2013. It takes almost 200 people to make this weekend work. Areas of ministry available for this FMC Bridge Event: being a character in the Marketplace, rolling scrolls, cookie baking, set building, meals for set-up crew, break room help, BMP Sunday lunch help and clean-up crew. Contact Cindy, 665-8402.

Cookies for BMP Workers

Providing cookies for the workers is a good way to help out behind the scenes for BMP. Please be sure to seal them well and drop them off Wednesday - Friday, Dec. 4 - 6. Healthy snacks would work, too, such as granola bars, fruit, etc.



A FEW GOOD MEN...
AND WOMEN



Fairview Missionary Church

A special welcome to our first time guests.

We invite you to go to the Guest Reception Center in the foyer to receive a special gift. Pastor Joel and Pastor Norm welcome your response to your experience at FMC today. Contact them by e-mail: joel@fairview-missionary.org or norm@fairview-missionary.org, land mail: 525 E 200 N, Angola, IN, 46703, or by phone: 665-8402.

This Week at a Glance...

Sunday, November 24

9 & 10:30 am **Worship Services**
 9 & 10:30 am **Adult Small Churches** - A list of Adult Small Churches and their locations is available at the Connection Center.
 9 & 10:30 am **Children's Sunday School**
 9:00 am **Teens Sunday School**
 12:30 pm - 2:30 pm **Kids Christmas Rehearsal** - Kids Worship Room
 No Preschoolers

Monday, November 25

8:00 am **Decorate the Church for Christmas!**
 6:30 pm **Ladies Basketball**, in the gym

Tuesday, November 26

6:15-7:30 am **Prayer time in the sanctuary.**
 All invited.
 8:00 am **Decorate the Church for Christmas**
 7:00 pm **Men's Basketball**, in the gym
 7:30 - 8:30 pm **Ladies Intercessory Prayer**

Wednesday, November 27

No Wednesday Grill or Classes

Thursday, November 28

Thanksgiving Day: Office and Day Care Closed

Friday, November 29

Office and Day Care Closed
 6 - 8:00 am **Men's Bible Study**, Fireside room
 7:00 pm **Young Adult Volleyball**, in the gym

Children

Children's Ministries -

Nursery through 5th grade

Sundays 9 and 10:30 am

Wednesdays 6:45 to 8:00 pm

Where do my kids go on
 Sundays and Wednesdays?

Nursery & Toddler - Hallway to the gym, across from the mailboxes

Preschool - Children's Ministry hallway

K-3rd grade - Kids worship room

4th & 5th grade - Room C120

Sundays - upper level of children's hallway

Wednesdays - upper level behind gym

Jessica Bonner, Director

419-889-7900 *jessica@fairview-missionary.org



**Fairview
 Student
 Ministries**

Grades 6-12

Sunday School 9:00 am

Wednesdays 6:30-8:00 pm

In teen rooms upstairs behind sanctuary

Jon and Erin Geyer, 260-223-2687
jon@fairview-missionary.org

UGLY Christmas Sweater Party

Wednesday, December 11

6:30-8:00 pm in youth room

(Sweaters can be found in any thrift store... or, possibly, a family member's closet!)

**For 6th-12th Grades - 3DYC
 (3 District Youth Conference)**

Sat-Mon, December 28-30, 2013

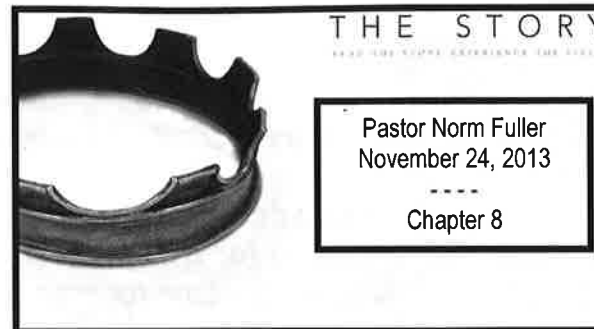
3DYC, in Ft. Wayne - a time to grow closer to God and grow closer as a youth group!

\$200 (all meals included).

Sign up in the teen room.

Registration Deadline: November 24

Check web site for updates: www.fairview-missionary.org



A Few Good Men... and Women

1. Do something radical to remove sin from your life.
2. Are you passing on God's truth to the next generation?
3. Deborah: A woman in a man's world
4. Gideon: Farmer - Warrior
5. Samson: A man's man

Some of the Scriptures used to form this message:

Judges 2:10-19

Genesis 15:16

Joshua 24:31, 23:12-13

Matthew 5:29-30

Hebrews 12:4

1 Corinthians 9:27

Judges 2:17

Deuteronomy 31:16

1 Corinthians 6:20

Hebrews 9:22

2 Peter 1:9

Galatians 5:24

Romans 1:6, 8:9

Judges 7:19, 16:27

1 John 1:5-6

For more details about
 children/teen/young adult
 events, go to our web site:
www.fairview-missionary.org

Contact Information for Ministry Staff

Glenn Flint 260-665-0083
 Jake Shipe 574-903-4052
 Jessica Bonner 419-889-7900
 Joel Greenwood 260-668-6734
 Jonathan Geyer 260-223-2687
 Norm Fuller 260-665-6975



Goal: 700 shoeboxes
Received: 714 shoeboxes!

Thank you everyone for your donations of filled boxes and financial donations for this project.

An idea: start picking up items all year long for next year's goal



Christmas Decorating

Many hands are needed (men and women) to help decorate the church for Christmas!

Monday and Tuesday,
 November 25 and 26.
 Beginning at 8:00 a.m.



CONNECT

New Attenders Reception
Sunday, December 15
 After 2nd service, in the gym.
 Come meet the FMC staff and have your questions about FMC answered!

Free Thanksgiving Dinner

Thanksgiving Day
 Samantha's Restaurant, Angola
 11:00 am - 3:00 pm
 and
 Lake Missionary Church
 9030 U.S. 20, west of Angola
 11:00 am - 2:00 pm

Sunday Speaking Schedule

| | |
|-----------|-------------|
| Dec. 1-15 | Pastor Joel |
| Dec. 22 | Pastor Norm |
| Dec. 29 | Pastor Joel |
| Jan. 5-26 | Pastor Norm |
| Feb. 2-23 | Pastor Joel |



Sunday, December 22

Either service. Pick up information from the literature rack and return the form by Thursday, December 19.

Retta Lewis will make a 45-60 second slide show of your child if you provide her with 15-20 of your favorite pictures on or before Wednesday, December 18. You can e-mail them to her at rettajolewis@yahoo.com

Christmas Help

If you and your family are FMC regular attenders and need help with Christmas, please drop a note to Pastor Norm and the church will help you.

Men to Men

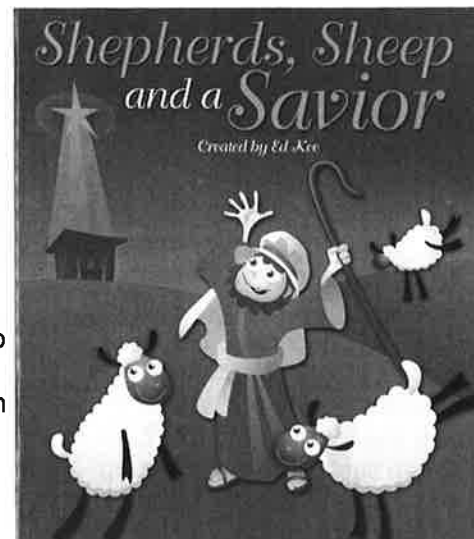
Mentoring training for men who want to help other men grow in Christ.
 Monday, November 25, 6:30-7:30 pm in the Fireside room. Not only is this for men who want to invest in the lives of their peers, but this is also for men who want to equip their sons to be mighty men of God!
 Conducted by Pastor Jake.



Young Adult Volleyball
 Friday, November 29, 7:00 p.m.
 In the gym



The FMC Meals Ministry provides meals for new moms and people recovering from surgery. Would you like to be on the calling list to provide a meal once in a while? Please sign up at the Connection Center.

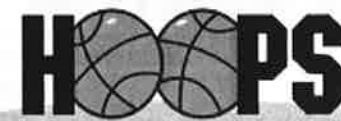


Kids Christmas Musical 2013

Wednesday, December 18, 7:00 p.m.
FMC Sanctuary

On a hill just outside of Bethlehem, lowly shepherds were tending their sheep at night. Nobody really wanted to talk to the shepherds. That is, nobody except an angel!

They may have been at the bottom of the social ladder in Bethlehem, but God chose shepherds to be the first ones to see the Savior! This is their story - what they heard and what they saw that marvelous night when God came to dwell with men.



Men's Basketball

Tuesdays, 7:00 pm

For all men post-high school.
 ?s, call Dave Huffman, 316-4986.
 and

Ladies Basketball

Tomorrow, November 25, 6:30 pm
 For all girls high school and up
 ?s, call Jessica Bonner 419-889-7900.



This fall we have 12 students attending 7 distinctively Christian Colleges: Anderson, Bethel, Grace, Huntington, Indiana Wesleyan, Liberty and Wheaton. Thank you for giving to this fund. You can support this scholarship by writing "College Fund" on your offering envelope. Please do not earmark your support for a specific student as the money is collected and evenly distributed to each student.



There are 40 small group, small church and fellowship flock type gatherings at FMC. They meet weekly, bi-weekly, monthly, etc. There is one for you too! If you are not now in a small gathering and would like to be in one, please contact Pastor Norm, 665-8402 or norm@fairview-missionary.org.



FMC is in the process of working on a picture directory. Our goal for completion is early summer of 2014. In order for us to reach that goal we will need your help, so please keep your eye out for future announcements concerning this. If you would like to get us a new picture of your family right now, that will help us get started. You can drop one off at the Connection Center or send it electronically to michelle@fairview-missionary.org. Please be sure to identify each person in the picture.

Bethlehem Marketplace Week Schedule

December 4 - 10, 2013

Wednesday: 8:00 am, prepare for BMP set up - bring in carpet, remove kitchen items, get gym ready
6:30 pm, begin setting up walls if you are not in a class

Thursday: 8:00 am, continue setting up walls, spread sand, bring in props, etc.
3:00-8:00 pm, continue setting up props in booths, adding greenery, etc. Both men and women still needed.

Friday: All day, finishing touches - ladies are especially needed this day!
6:30 pm dress rehearsal

Saturday: 1-5 pm, BMP

Sunday: 11:45 am, lunch served for first shift BMP workers, 1-5 pm

Monday: 8:00 am, tear down BMP, remove sand, clean the whole church

Tuesday: 8:00 am, finish cleaning church



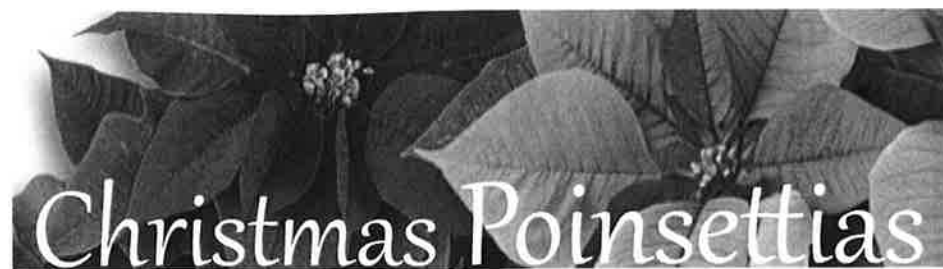
Do Bridge Events fulfill their purpose? Overwhelmingly, yes. Each year we ask the BMP crowd if this is their first time and about 75% of visitors say yes, this is their first time. Bridge Events are designed to draw new people into the church.

Bethlehem Marketplace (BMP)

- ◆ There are quite a few open spaces left for cast. Please sign up today! Thank you to everyone who has said YES! to presenting the Christmas story in this unique way.
- ◆ If you are already signed up for the cast, you should have information in your church mailbox today. Please contact Cindy in the office if you don't.
- ◆ Costumes will be available for pick-up next Sunday, December 1. Watch for a costume note in your church mailbox.
- ◆ Please look over the BMP Week schedule on the opposite page. We need help every day of the week, especially Wednesday at 6:30 p.m. if you are not involved in a Wednesday night class.
- ◆ Publicity for you to hand out is available at the BMP table in the foyer.
- ◆ Be in prayer for BMP:
For the people you are inviting to come.
For the set up crew. Without them there is no BMP.
Pray for good weather—not too warm, not too cold, no freezing rain...
Pray for the health of all the workers - it is a long weekend for many.
Pray that God would put His Spirit in a styrofoam city filled with sand, props, and human actors.
Thank God for the volunteers who provide food—before, during, and after the event.
Pray for the publicity that goes out to four counties and on the radio.
Every year there are people who are moved to tears by the streets of Bethlehem. Thank God for changed lives at BMP.
Thank God for the music that keeps the crowd both calm and excited; and prepares their hearts for BMP's crowded streets.

Holiday Schedule 2013

| | | |
|--------------------|----------------|--|
| Sunday | November 24 | Last day for teens to sign up for 3DYC. See Pastor Jon. |
| Sunday | November 24 | 12:30-2:30 p.m. Kids Christmas Musical Rehearsal (No Preschool Rehearsal) |
| Monday/Tuesday | November 25/26 | Decorate Church for Christmas (could use 10-15 people) |
| Wednesday | November 27 | No Wednesday evening ministries. Enjoy family time. |
| Thursday/Friday | November 28/29 | Office and Daycare closed |
| Wednesday - Friday | December 4 - 6 | Set up Bethlehem Marketplace, 8:00 a.m. - 5:00 p.m. Need 10 people each day with a special appeal to contractors Wednesday evening at 6:30 p.m. to set up walls. |
| Friday | December 6 | 6:30 p.m. BMP Dress Rehearsal (not music rehearsal) |
| Saturday/Sunday | December 7 - 8 | BMP, 1-5 p.m. |
| Monday | December 9 | 8:00 a.m. Tear down BMP. Special appeal to cleaning crews, 3 - 9 p.m. |
| Tuesday | December 10 | 8:00 a.m. BMP detail cleaning crew. Need 10 people. We clean everything in the church twice. |
| Sunday | December 15 | 12:30-2:30 p.m. Kids Christmas Dress Rehearsal With Preschoolers |
| Wednesday | December 18 | 7:00 p.m. Children's Christmas program. All teen and adult ministries join in the sanctuary to watch the program. |
| Sunday | December 22 | Family Christmas worship services and child dedication. No children's programs, no teen or adult small churches. Infant and toddler rooms staffed. |
| Tuesday-Wednesday | Dec. 24-Jan. 1 | Daycare closed |
| Tuesday | December 24 | 6:00 p.m. Christmas Eve service, usually the largest attended service of the year. Communion. |
| Wednesday | December 25 | No Wednesday evening activities, church office closed |
| Saturday-Monday | December 28-30 | 3DYC in Fort Wayne |
| Monday | December 30 | Undecorate the church |
| Wednesday | January 1 | No Wednesday evening activities, church office closed |



Each year we decorate our sanctuary and foyer with poinsettias that people have donated in memory or honor of a loved one. If you would like to remember or honor your loved one with a poinsettia, please fill out the form below and return to the Connection Center with \$15.00 for each plant requested.

Plants will arrive right before Bethlehem Marketplace and be used to decorate for Christmas during December. You may take poinsettias you ordered home following the Christmas Eve service on December 24.

I want to HONOR:

I want to REMEMBER:

Your Name: _____

How many plants? _____

Requests with payment must be received by today, November 24.



Year-end Giving Information

1. If you are mailing your gift, it must be postmarked by December 31, 2013, and the check dated in 2013. This year's year end giving will go toward equipping a Child Evangelism Fun Trailer with tools to reach children for Christ. Total cost is \$5,500.
2. If you are giving cash or check in the offering, we can receive it in the offering on December 29, 2013. The check must be dated in 2013 to receive 2013 credit. Please be sure to clearly mark your giving envelope with the year so your gift is properly credited.
3. You get the biggest tax break by giving to the Bethel College Scholarship Fund. A \$400 gift gets you \$200 directly off your Indiana State tax or a \$200 gift gets you \$100 off. Get details in the literature rack. Make your check **payable to Bethel College** and put in FMC's offering by **December 15, 2013**.
4. As a walk of faith, many families pray to give more each year than they did the previous year. If you want to know your giving for last year, or any year, give a note to Michelle, Fairview's Financial Secretary. Of course, we only keep records of giving for those who have giving numbers. To get a giving number, please drop a note in the offering or ask at the Connection Center.
5. There is a special brochure in the literature rack entitled "Special Gifts and Memorials". It has many suggestions in it from a few hundred dollars to \$10,000,000 for your prayerful consideration. There are other missions organizations and local ministries we support that can use help too. Information about Project Help, and their gift catalog, is in the literature rack. Feel free to contact Pastor Norm or Pastor Joel as well.
6. At the start of a new year many people start new habits for spiritual growth. If you are being led to consider new habits in giving you may want to consider E-giving where your giving can be electronically transferred to the church from your checking, savings, or credit card at an amount and time interval you approve. Get information from the literature rack across from the mailboxes.
7. If you are considering non cash giving, such as stock, bonds, real property, the church office should be made aware of your intentions ASAP to make sure all the proper paperwork is finished before the end of the year.
8. At this time of the year many people make decisions to move their God-given financial resources more directly into Kingdom-impact work. The Missionary Church has two organizations to help you do this.
The Missionary Church Investment Foundation is our denominational foundation with offices in Fort Wayne, Indiana. Contact 260-747-2027 or mcif@mcusa.
Also, United Missionary Loans and Investments, our district loan and investment organization with offices in Elkhart, Indiana. Contact them at 574-293-1332 or sara@mcncd.org. Both organizations are chartered under the federal government and have been in existence since the 1950's. They use our investments to loan funds only to Missionary Churches and related Missionary Church organizations that need funds to expand their ministry facilities.

Thank you for your very generous giving.

Bethel College Indiana

Bethel College is our church college. As part of the Missionary Church, we own part of Bethel.

Matching Scholarship Fund

How your gift benefits FMC students

FMC gives up to \$1000 annually to our students attending Bethel. FMC's gift is matched by Bethel. In addition, Bethel gives a \$2000 scholarship annually to students coming from a Missionary church. That is a total of up to \$4000 a year just because a student is from FMC and attends Bethel. Over a 4 year college experience that is \$16,000 - almost one semester free tuition!

How your gift benefits YOU

State Tax benefits for Individuals/Couples

You, as an Indiana taxpayer, will receive a tax credit equal to 50% of your contribution to Bethel College. This means that a \$400 gift to Bethel College yields a \$200 tax credit; a \$200 gift yields a \$100 credit; a \$100 gift yields a \$50 credit and so on. In other words, you will be reimbursed for half of your gift, not by the College which puts your money to good use - but by the state. Taxpayers filing singly receive half these amounts. To take advantage of this opportunity you must use the Indiana Department of Revenue Form CC-40 when filing your state income tax return.

Corporations

Indiana Corporations may receive a maximum tax credit of \$1000 on gifts of \$2000 or more. Corporations may receive 50% credit on gifts, not to exceed 10% of the company's adjusted gross income tax, or \$1000, whichever is less.

Federal Tax Deduction

In addition to the Indiana tax credit, a contribution to Bethel College may also result in a federal tax deduction. Generally, to qualify for a federal tax deduction, you must itemize deductions on the Federal Tax Form 1040 (long form). The amount of the deduction is based on your income and the amount of your contribution. The federal tax deduction, unlike the state tax credit, is computed as a reduction in your taxable income and therefore, ultimately, the amount of taxes you owe.

Checks MUST be made payable to BETHEL COLLEGE and given to the FMC office.